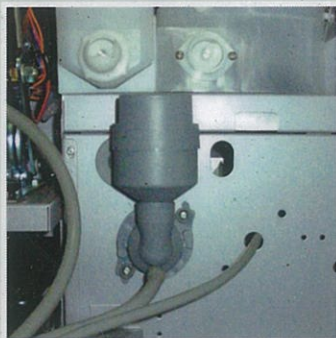
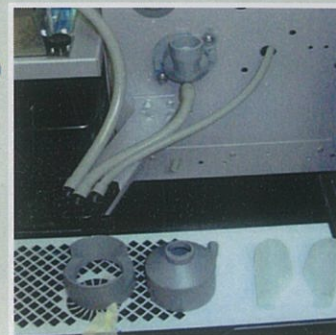


Regular Cleaning & Maintenance Guide



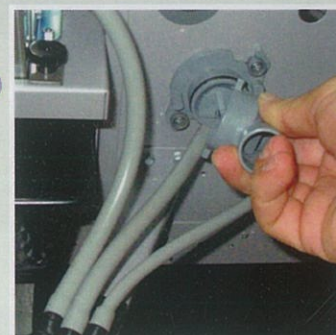
- 1 Take the elbows off the chocolate & milk containers, wash and dry thoroughly.



- 2 Hold onto the 2 top sections of the mixing area and pull them towards you, lifting them out of the mixer section.



- 3 Hold onto the mixing bowl & twist it to the right, unhooking it from its mounting. Then take the grey hose off the mixing bowl.



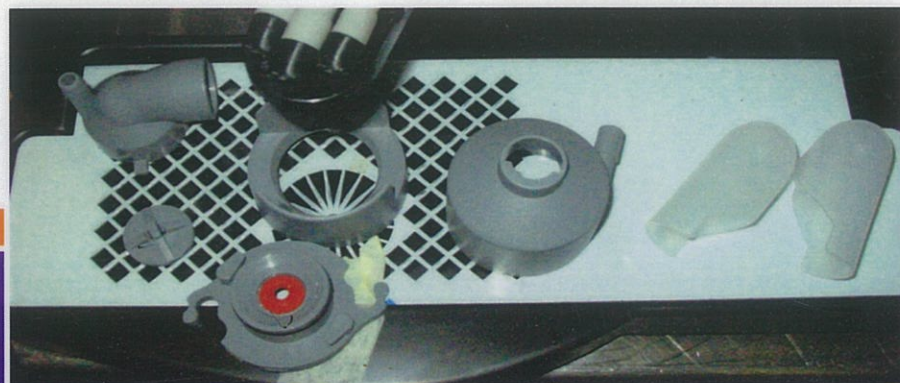
- 4 Use the mixing bowl to remove the whipper wheel, by placing it behind the wheel and levering it off.



- 5 Unhook the base plate from it's mountings by turning clockwise 10mm and pulling towards you.



- 6 Clean the whipper shank and the surrounding area of any residual milk or chocolate powder, with a damp cloth.



- 7 **CLEAN THESE PARTS WEEKLY DO NOT USE ANY ABRASIVES OR SHARP OBJECTS!**

Please Turn Over

Re-assembling the unit



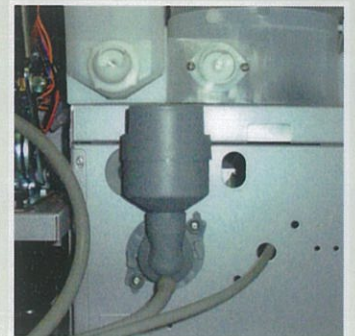
- 1 Place the base plate back onto its mountings, turning anti clockwise 10mm to engaging the lock tabs firmly.



- 2 Find the flat spot on the whipper shank and turn it so it faces the top. Then on the whipper wheel you will find a small dot, align the dot with the flat on the shaft & push the wheel back on as far as possible.



- 3 Place the mixing bowl on next & turn it so that the bowl hooks back into its mountings.



- 4 Place the next 2 pieces of the mixing area back into place by gently inserting them into the correct areas. The lower half will fit into a round hole on the back wall, the top half will fit into the rectangle hole on the wall just above.



- 5 Place the elbows back into place, and the cleaning process is completed.